



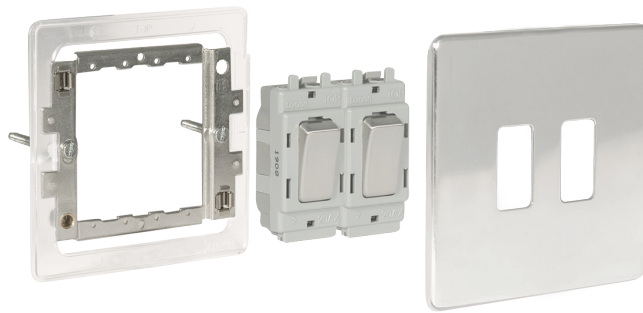
Nexus Grid Wiring Accessories

Ideal for domestic, commercial and industrial applications - Grid matches Nexus finishes to provide an extended range

Nexus Grid



No visible plastic around switches



Easy to install with cantilever module to frame installation

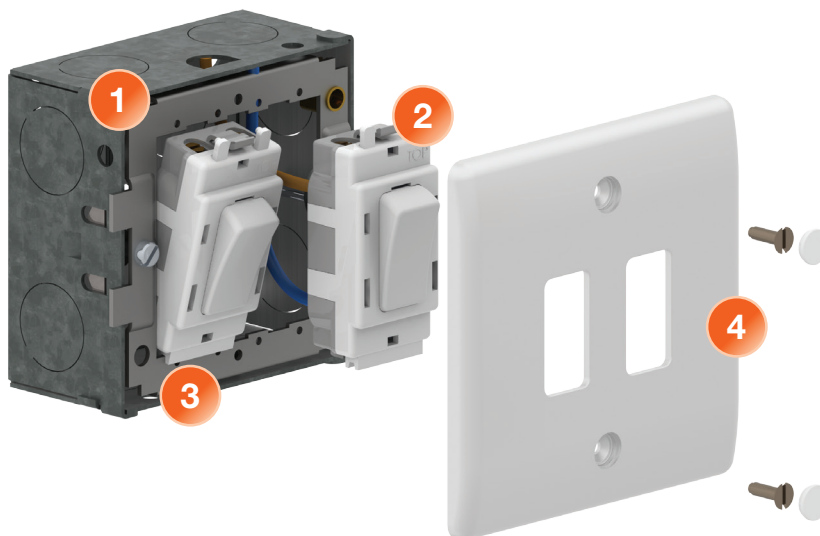


Interchangeable rockers provide flexibility

20 Amp Modules	43
Accessories	43
Indicators	44
Dimmers	44
Fused & Flex Outlets	44
Front Plates	45
Grid Frames	46
Boxes	46
Rockers	47



Quick and easy to install



- Step 1**

- Screw grid frame to mounting box
- Step 2**

- Wire modules
- Step 3**

- Slot the module on to the frame and click into place
- Step 4**

- Fit the plate

Nexus Grid

Cat No.					Description	Inner Carton	Outer Carton
20 Amp - 20AX Modules							
White	Chrome	Brushed Steel	Black Nickel	Polished Brass			
G12	GPC12	GBS12	GBN12	GPB12	2 way, single pole	10	100
G13	GPC13	GBS13	GBN13	GPB13	Intermediate	10	100
G14	GPC14	GBS14	GBN14	GPB14	1 way re-tractive, SP (PRESS)	10	100
G12C*	-	-	-	-	2 way, single pole centre off	10	100
G30	GPC30	GBS30	GBN30	GPB30	20A double pole	10	100
G31	-	-	-	-	20A DP + indicator	10	100

- * For metal versions, select additional rocker accordingly
- Terminal capacity 4 x 1.0mm², 4 x 1.5mm², 2 x 2.5mm² & 1 x 4.0mm²
- Manufactured to BS EN 60669-1
- Minimum mounting box depth 25mm

- Alternative printed rocker covers available
- Clearly marked terminals with backed out captive screws for easy installation
- 20 Amp, 20AX inductive rated



20 Amp - 20AX Secret Key Modules							
White	Chrome	Brushed Steel	Black Nickel	Polished Brass			
G12KY	GPC12KY	GBS12KY	GBN12KY	GPB12KY	2 way, single pole	10	100
G30KY	GPC30KY	GBS30KY	GBN30KY	GPB30KY	Double pole	10	100
G12EL	GPC12EL	GBS12EL	GBN12EL	GPB12EL	2 way, single pole - printed 'EMG LTG TEST'	10	100
G30EL	-	-	-	-	Double pole - printed 'EMG LTG TEST'	10	100

- Terminal capacity 4 x 1.0mm², 4 x 1.5mm², 2 x 2.5mm² & 1 x 4.0mm²
- Manufactured to BS EN 60669-1
- Minimum mounting box depth 25mm

- Supplied with key, spare keys available
- Clearly marked terminals with backed out captive screws for easy installation
- 20 Amp, 20AX inductive rated



Accessories					
GSKY	GSKY Spare secret key (pack 10)	100pks		100pks	1000



- Compatible only with BG secret key switch grid modules

Nexus Grid

Cat No.	Description	Inner Carton	Outer Carton
Indicator Modules - Suitable for use with all finishes			
GINGR	Green	10	100
GINOR	Orange	10	100
GINRD	Red	10	100



- For use with all finishes
- Manufactured to BS 5733
- Terminal capacity 3 x 2.5mm², 2 x 4.0mm² & 1 x 6.0mm²
- Minimum mounting box depth 25mm
- Clearly marked terminals with backed out captive screws for easy installation

Dimmer Modules							
White	Chrome	Brushed Steel	Black Nickel	Polished Brass			
GD400	GPCD400	GBSD400	GBND400	GPBD400	2-way 400W push dimmer	10	100

- Manufactured to BS EN 60669-2-1
- Minimum mounting box depth 35mm
- Suitable for tungsten lamps, low voltage transformers & mains GU10 halogen



Fused & Flex Outlet Modules & Blank							
White	Chrome	Brushed Steel	Black Nickel	Polished Brass			
GFUSE	GPCFUSE	GBSFUSE	GBNFUSE	GPBFUSE	Fuse holder	10	100
GFLEX	GPCFLEX	GBSFLEX	GBNFLEX	GPBFLEX	Flex outlet (up to 10mm)	10	100
GBLNK	GPCBLNK	GBSBLNK	GBNBLNK	GPBBLNK	Blank module	10	100

- Fused Outlets**
- Manufactured to BS 1363 Part 4
 - Terminal capacity 3 x 2.5mm², 2 x 4.0mm² & 1 x 6.0mm²
 - Minimum mounting box depth 25mm
 - Clearly marked terminals with backed out captive screws for easy installation
 - Supplied with 13A fuse fitted to BS 1362

- Flex Outlets**
- Manufactured to BS 5733
 - Minimum mounting box depth 35mm
 - Cable entry with cord grip
 - Suitable for cables with an outside diameter up to 10mm



Nexus Grid

Cat No.		Description				Inner Carton	Outer Carton
Front Plates - Nexus Metal							
White	Chrome	Brushed Steel	Black Nickel	Polished Brass			
G81	GNPC1	GNBS1	GNBN1	GNPB1	1 gang	20	200
G82	GNPC2	GNBS2	GNBN2	GNPB2	2 gang	20	200
G83	GNPC3	GNBS3	GNBN3	GNPB3	3 gang	10	100
G84	GNPC4	GNBS4	GNBN4	GNPB4	4 gang	10	100
G86	GNPC6	GNBS6	GNBN6	GNPB6	6 gang	10	100
G88	GNPC8	GNBS8	GNBN8	GNPB8	8 gang	10	100
G89	-	GNBS9	-	-	9 gang	10	100
G812	-	GNBS12	-	-	12 gang	10	100

- Manufactured to BS 5733
- Front plates match the power products of the White Moulded & Nexus Metal ranges
- No visible plastic around rockers

- White plates supplied with covers to conceal fixing screws
- 6/8g grid surface/flush mounting box (MC503)
- 9/12g flush mounting wall box (HGS912)



Front Plates - Screwless Flatplate

Chrome	Brushed Steel	Black Nickel	Polished Brass			
GFPC1	GFBS1	GFBN1	GFPB1	1 gang	20	200
GFPC2	GFBS2	GFBN2	GFPB2	2 gang	20	200
GFPC3	GFBS3	GFBN3	GFPB3	3 gang	10	100
GFPC4	GFBS4	GFBN4	GFPB4	4 gang	10	100
GFPC6	GFBS6	GFBN6	GFPB6	6 gang	10	100
GFPC8	GFBS8	GFBN8	GFPB8	8 gang	10	100

- Manufactured to BS 5733
- Note - 1, 3, 6g front plate supplied with grid blanks (Screwless Only)
- Front plates match the standard Flatplate screwless range
- Flat profile with rounded edges

- Secure easy "clip on, clip off" front plate design
- 1, 3 and 6 gang front plates are supplied with blanking pieces for the grid frame
- No visible plastic around rockers
- 6/8g grid surface/flush mounting box (MC503)

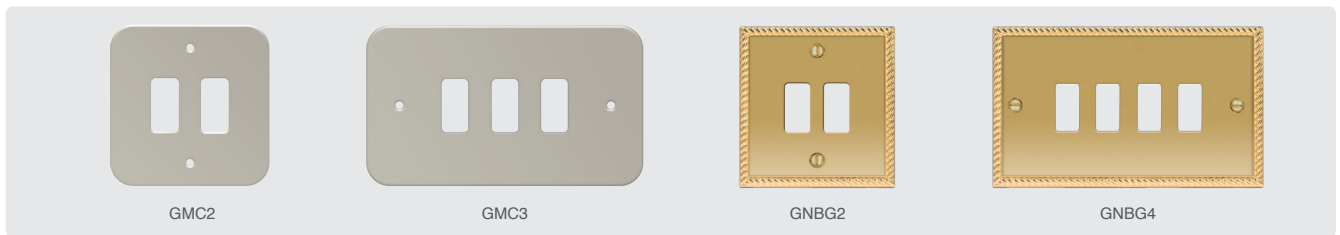


Nexus Grid

Cat No.		Description		Inner Carton	Outer Carton
Front Plates - Metal Clad, Brass Georgian & Euro Moulded					
Metal Clad	Brass Georgian	Euro Moulded			
GMC1	GNBG1	PMEMS1	1 gang	20	200
GMC2	GNBG2	PMEMS2	2 gang	20	200
GMC3	GNBG3	-	3 gang	10	100
GMC4	GNBG4	PMEMS4	4 gang	10	100
GMC6	-	-	6 gang	10	100
GMC8	-	-	8 gang	10	100

- Metal Clad**
- Manufactured to BS 5733
 - A rugged, scratch resistant range, suitable for everyday use in commercial and industrial environments
 - Manufactured in heavy gauge steel and finished with epoxy powder coating
 - Front plates match the standard metal clad range

- Brass Georgian**
- Manufactured to BS 5733
 - Cast brass plates with a rope effect detail
 - 6/8g grid surface/flush mounting box (MC503)



Grid Frames

Nexus & Metal Clad	Screwless Flat Plate Only		Inner Carton	Outer Carton
GFR12	GFR12FP	1 & 2 gang	20	200
GFR34	GFR34FP	3 & 4 gang	10	100
(Use-2xGFR34)	GFR68FP	6 & 8 gang	5	50

- GFR12/34**
- These frames are for all screwed plate versions
 - Universal frame for Metal Clad, White Moulded, Nexus Metal & Brass front plates
 - Frames are supplied with spacers for use with the Metal Clad front plates
 - Metal Clad front plates require tabs to be bent along performed indents

- GFR12/34/68FP**
- These frames are for the screwless Flatplate versions
 - Fixed integrated plastic gasket to protect metal edges from moisture
 - Earth terminal(s) fitted as standard
 - Captive fixing screws for ease of assembly



Cat No.	Description	Inner Carton	Outer Carton
Boxes			
MC501	Square surface mount box (1g & 2g grid)	10	100
MC502	Rectangular surface mount box (3g & 4g grid)	5	50
MC503	Double metal box - surface or flush mount (6g & 8g grid)	5	50
HGS912	Flush mount box (9g & 12g grid)	5	50

- Fitted with earth terminal



Nexus Grid

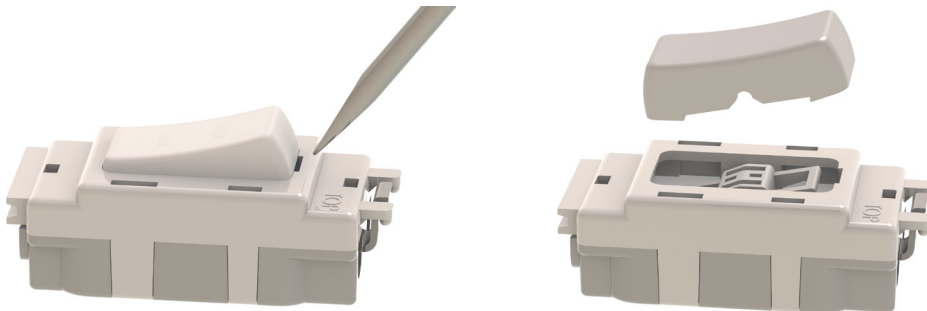
Cat No.					Description	Inner Carton	Outer Carton
Rockers							
White	Chrome	Brushed Steel	Black Nickel	Polished Brass			
GRHBW	GRHBPC	GRHBBS	GRHBBN	GRHBPB	Printed - Hob	100pks	1000
GROVW	GROVPC	GROVBS	GROVBN	GROVPB	Printed - Oven	100pks	1000
GRFNW	GRFNPC	GRFNBS	GRFNBN	GRFNPB	Printed - Fan	100pks	1000
GRMMW	GRMMPC	GRMMBS	GRMMBN	GRMMPB	Printed - Washing Machine	100pks	1000
GRTDW	GRTDPC	GRTDBS	GRTDBN	GRTDPB	Printed - Tumble Dryer	100pks	1000
GRFDW	GRFDPC	GRFDBS	GRFDNB	GRFDPB	Printed - Fridge	100pks	1000
GRFZW	GRFZPC	GRFZBS	GRFZBN	GRFZPB	Printed - Freezer	100pks	1000
GRBLW	GRBLPC	GRBLBS	GRBLBN	GRBLPB	Printed - Boiler	100pks	1000
GRMWW	GRMWPC	GRMWBS	GRMWBN	GRMWPB	Printed - Microwave	100pks	1000
GRCHW	GRCHPC	GRCHBS	GRCHBN	GRCHPB	Printed - Cooker Hood	100pks	1000
GRHWW	GRWHPC	GRWHBS	GRWHBN	GRWHPB	Printed - Water Heater	100pks	1000
GRWDISW	GRWDISPC	GRWDISBS	GRWDISBN	GRWDISPB	Printed - Waste Disposal	100pks	1000
GRACW	GRACPC	GRACBS	GRACBN	GRACPB	Printed - Air Conditioning	100pks	1000
GRDWW	GRDWPC	GRDWBS	GRDWBN	GRDWPB	Printed - Dish Washer	100pks	1000
GRBELLW	GRBELLPC	GRBELLBS	GRBELLBN	GRBELLPB	Printed - Bell Symbol	100pks	1000
GRFFW	GRFFPC	GRFFBS	GRFFBN	GRFFPB	Printed - Fridge Freezer	100pks	1000
GRHTW	GRHTPC	GRHTBS	GRHTBN	GRHTPB	Printed - Heater	100pks	1000
GRUPW	GRUPPC	GRUPBS	GRUPBN	GRUPPB	Unprinted Rocker	100pks	1000
GRUPG	-	-	-	-	Unprinted Graphite Rocker (Part M)	100pks	1000



- White Rockers - Markings Printed
- Metal Rockers - Markings Embossed
- Supplied in packs of 10

Replacement /Interchangeable Rockers

Replacement rockers - Switch modules are supplied with plain rockers, however a selection of pre-printed rockers are available.



To replace:

- Remove existing rocker by inserting screwdriver under rocker cap and lifting.
- Position replacement cap into aperture and clip into place ensuring text is correctly aligned in relationship to top of module.

Nexus Grid

General Assembly Guide

Step 1

Fit and secure appropriate mounting box and frame. Please see Note 1 – for additional assembly instructions required that are relevant to the plate type being installed -

- Pull cabling through frame and strip insulation accordingly.
- Ensure an earth connection between frame and box (if required).
- Systematically terminate cables into each module.

Step 2

To fit module to frame -

- Locate groove in lower edge of module over lower edge of aperture in frame and pivot upwards locating the pegs on the module into holes in frame and clip into place
- It is recommended to decorate wall before fixing front plate.
- Attach front-plate using fixing screws provided or push for secure clip-on. For Screwless Front-plates please see Note 2 for additional assembly instructions.

Note 1

For **White Moulded**, **Nexus Metal** and **Brass Georgian** - Remove the 2 plastic spacers and discard. For **Metal Clad** and **Grid** - Bend the 4 lugs down where indicated by the V notches and ensure plastic spacers are fitted.

The position of the frame in relationship with the wall can be adjusted by the two captive fixing screws.

For Decorative **Flatplate** - Before fixing the frame to the wall ensure that the gasket supplied is correctly positioned between the frame and the wall.

Note 2

Decorative Flatplate - When fitting ONE or THREE modules to the screwless Flatplate grid frame - the blanking strips supplied must be fitted either side of the module(s) - to prevent access to the wiring.

Frontplate - should be fitted with the removable notch located over the angled face of the gasket in the lower right hand corner.

