

Interior Lighting

2019 / 2020



DETA

Interior Lighting



Interior Lighting includes an extensive range of Fire Rated Downlights, Surface Luminaires and Shaver Lights suitable for modern and traditional installations.

Vimark Integrated Fire Rated Downlights are compact and versatile with a lens optimised to ensure even dispersion of flicker free light at a 38° beam angle. The IP65 range is comprised of warm white, cool white and *AmbiDim* options, and is fully compliant with Building Regulations Part B, C, E and L.

GU10 Fire Rated Downlights are supplied fitted with energy efficient dimmable or non-dimmable LED lamps and are available in a choice of finishes with fixed and IP65 options. The range incorporates a number of unique features and is fully compliant with Building Regulations Part B, C, E and L.

Surface Luminaires deliver an attractive and efficient lighting solution for multiple interior applications, combining crisp bright light, instant illumination and low power consumption.

Fire Rated Downlights

Vimark Integrated Downlights are compact and versatile, and at only 50mm tall, they are perfect for use within shallow ceiling voids.

IC-F Rated Construction

Insulation can be laid over the fitting

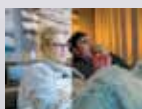
Spring Clips

Suitable for single or double thickness plasterboard



AmbiDim Technology

Creates a warmer lighting tone (3000k to 2200k) as light levels are reduced, replicating the effect of traditional incandescent and halogen lamps



Easy Installation

Large 3 way screwless loop-in loop-out terminal block and inline connector for quick installation



Twist and Lock Bezels

Supplied with White bezel. Chrome and Stainless Steel bezels available as accessories



GU10 Downlights incorporate a number of unique features and are perfect for new build or retrofit applications.

Large Loop in / Loop Out Terminal Block

for ease of installation

Detachable Terminal Bracket

Spring Clips

suitable for single or double thickness plaster board

Bezel

single piece design in fixed and IP65 versions

Gasket on Flange

provides the seal to prevent movement of air, and reduces the passage of sound (Part E of the Building Regulations)

Intumescent seal

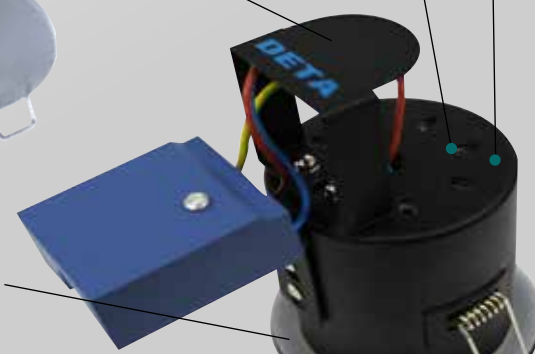
provides fire rating compliance (allows installation to meet Part B of the Building Regulations)

Large Air Vents

provide maximum heat dissipation

Insulation Separator

allows loft insulation to be laid over the top of the fittings



Vimark Integrated Fire Rated Downlights

- Standard fittings available in 3000K or 4000K
- *AmbiDim* fittings provide a warmer lighting tone (3000K to 2200K) as light levels are reduced
- White bezel supplied as standard, Chrome and Stainless Steel bezels available separately
- Mounting springs suitable for single and double thickness plaster board

- IC rated construction allows insulation to be laid over the fitting
- 3-way loop-in/loop-out screwless terminal block for easy termination of T&E cables
- Compatible with Deta universal dimmer
- 5-year extended* guarantee available



Dimmable

L1402WH# 6W IP65

AmbiDim

L1421WH 6W IP65 3000K to 2200K

Bezels

Chrome/Stainless Steel

L1409CH Bezel

L1409SS



L1402WH3



L1402WH4



L1421WH



L1409CH



L1409SS

Installation Information

	Cut out Ø	Min. Void Depth
IP65 Downlight	75mm	75mm

Available with either 3000K or 4000K.

When ordering, please indicate preference by adding suffix 3 for a 3000K or 4 for a 4000K.

e.g. L1402WH3 for a 3000K fitting

* Visit www.detaelectrical.co.uk/vimark/guarantee

GU10 Fire Rated Downlights

- Supplied complete with a GU10 LED lamp
- Mounting springs suitable for single and double thickness plaster board
- Available in white, chrome and satin chrome finishes
- 3-way loop-in/loop-out terminal block for easy termination of T&E cables
- Compatible with Deta universal dimmers (dimmable versions only)
- 2-year guarantee on fitting



Dimmable

Chrome/Satin Chrome/White

L1690CH# Fixed
L1690SC#
L1690WH#

L1692CH# IP65
L1692SC#
L1692WH#

Non-Dimmable

Chrome/Satin Chrome/White

L1680CH# Fixed
L1680SC#
L1680WH#

L1682CH# IP65
L1682SC#
L1682WH#



L1690SC



L1690WH



L1690CH



L1680SC



L1680WH



L1680CH

Installation Information

	Cut out Ø	Min. Void Depth
Fixed Downlight	75mm	140mm
IP65 Downlight	75mm	140mm

Available with either 2800K or 4000K LED Lamp.
When ordering, please indicate preference by adding suffix
3 for a 2800K lamp or 4 for a 4000K LED lamp.
e.g. L1690CH3 would include a 2800K LED lamp

Spectra 14W Surface Luminaires

- White or chrome bezel, opal diffuser
- Slim profile
- 14W LED – 1200 lumens
- Colour temperature 4000K
- Tri-colour model – 3000/4000/5000K
- Interior use only

- Emergency version has a 3-hour battery back up
- Microwave with auto on/off and corridor function
- IP65 rated
- In compliance with BS EN 60598-1



14W Standard

White/Chrome

L1061WH 14W LED standard
L1061CH

14W Tri-colour

White/Chrome

L1066WH 14W LED
L1066CH

14W Microwave Sensor and Tri-colour

White/Chrome

L1067WH 14W LED with microwave sensor
L1067CH

14W Emergency and Tri-colour

White/Chrome

L1068WH 14W LED emergency
L1068CH

14W Microwave, Emergency and Tri-colour

White/Chrome

L1069WH 14W LED microwave sensor, emergency
L1069CH



L1061CH



L1061WH

Stratus 8W Surface Luminaire

- White or chrome bezel, opal diffuser
- 8W LED
- 520 lumens
- Colour temperature 4000K
- Integral driver
- IP65 rated
- 3-year guarantee



8W Standard

White/Chrome

L1011WH 8W LED standard
L1011CH



L1011CH



L1011WH

Stratus 14W Surface Luminaire

- White or chrome bezel, opal diffuser
- 14W LED
- 1200 lumens
- Colour temperature 4000K
- Integral driver
- Emergency version has a 3 hour battery back up
- IP65 rated
- 3-year guarantee



14W Standard

White/Chrome

L1021WH 14W LED standard
L1021CH



L1021CH



L1021WH

14W Microwave Sensor

White/Chrome

L1022WH 14W LED with microwave sensor
L1022CH

14W Emergency

White/Chrome

L1023WH 14W LED emergency
L1023CH

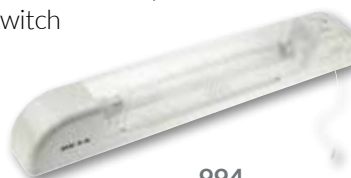
Shaver Light

- Dual voltage outlet - 240/115V ac
- 994 has 60W tungsten equivalent 284mm LED lamp
- 994 colour temperature is 3000k
- 994 light output 480 lumens
- L1094 has integrated LED light source rated at 7W
- L1094 colour temperature is 4000k
- L1094 light output 450 lumens
- 2-year guarantee



Shaver Light

994 Dual voltage with socket, pull cord switch and LED lamp
L1094 LED Dual voltage with socket, pull cord switch



994



L1094



DETA

Deta Electrical company Limited
Kingsway House Laporte Way
Luton Bedfordshire LU4 8RJ UK

t: +44 (0) 1582 544 544
f: +44 (0) 1582 544 501
e: sales@detaelectrical.co.uk
w: detaelectrical.co.uk